

- ⓓ Paneel-Drallauslaß
- ⓖⓑ Panel-swirl diffuser
- ⓕ Diffuseur à tourbillon
- ⓔ Diffusori elicoidale per pannelli
- ⓔ Difusor rotacional
- ⓗ Örvénybefúvó panelmennyezethez

DQJ-SR-P



SCHAKO
Air Movement

Ferdinand Schad KG
Steigstraße 25 – 27
78600 Kolbingen
Telefon (0 74 63) 9 80-0
Telefax (0 74 63) 9 80-200
e-mail@schako.de

Description

This diffuser is particularly well-suited for installation in panelled ceilings. The dimensions of the front plate are the same as the individual panels giving the whole ceiling a harmonious, aesthetically pleasing appearance.

The diffuser is predominantly used in comfort areas. The blades can be adjusted at a later stage. By raising the horizontal-outflow blades, the air outflow can be changed to vertical. The air jet can therefore be altered from an air jet which sinks from the ceiling to a vertical outflow.

Various air jet guides can be set at the factory. Unless otherwise specified, air jet guide „B“ will be supplied.

The air diffuser is also well-suited for use in installations with variable volume flows. The high outflow velocities ensure a stable air jet. Even when the volume flow is low, the air jet does not sink abruptly from the ceiling.

Materials

Front plate made of sheet steel, colour: RAL 9010 (white) or as an optional extra one of the colours from the RAL colour chart.

Blades in support profile section made of plastic, colour: RAL 9005 (black), RAL 9010 (white) or aluminium painted the same colour as the front plate.

Optional extra: Plenum box made of galvanised sheet steel

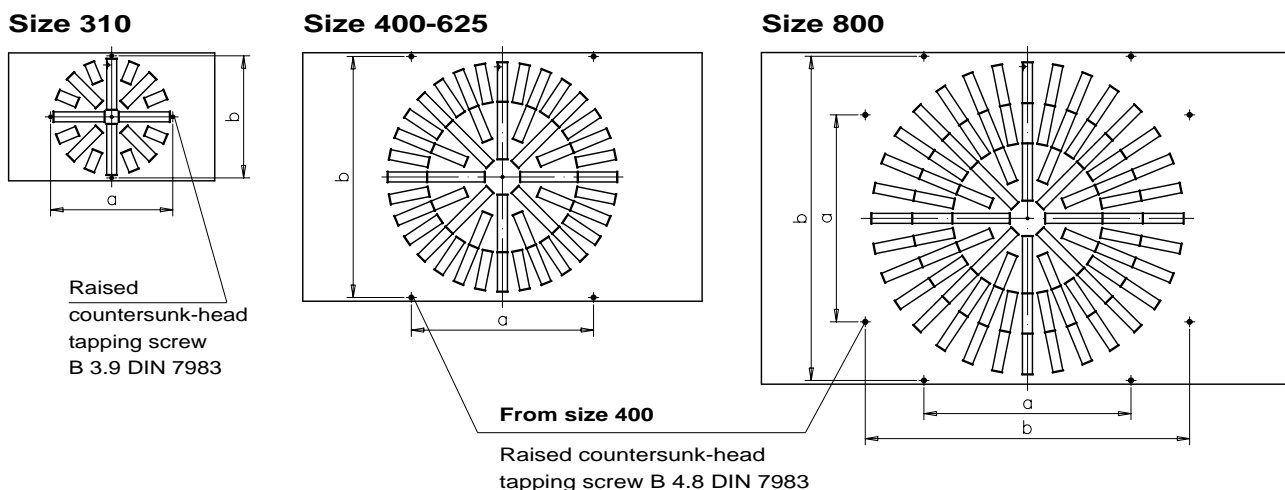
Mounting

Standard version: Screw mounting (SM) with 4 countersunk screws, with 8 countersunk screws for size 800.

Optional extra: Concealed mounting (VM)

Additional technical data, blade adjustment possibilities and special blade positions can be found in the technical documents for ceiling swirl diffuser type DQJA-SR (Index 8b, Pages 0818.5, 0818.7 and 0818.15 - 0818.20).

Mounting possibilities with screw mounting

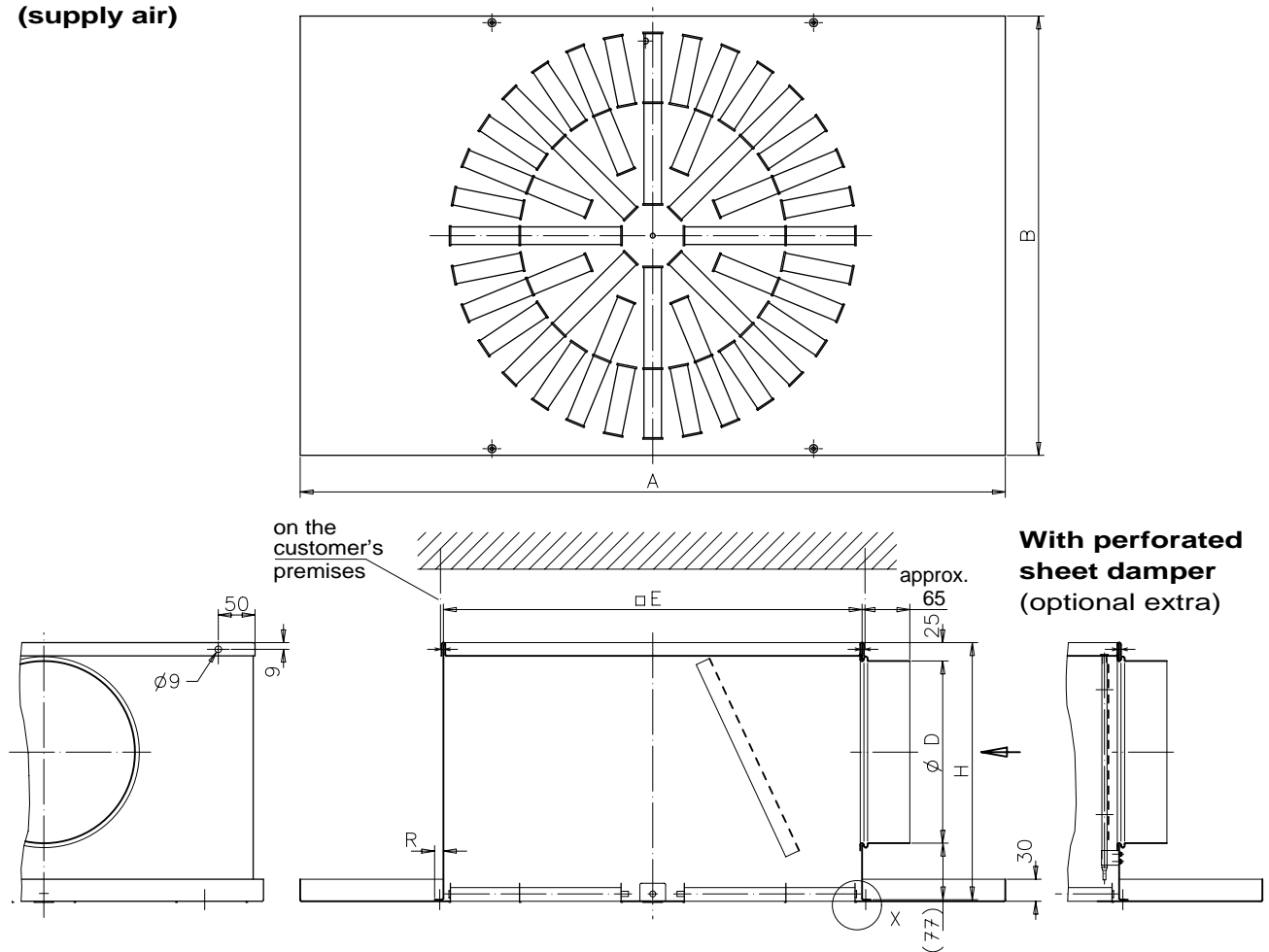


Ceiling swirl diffuser type DQJ-SR-P in panelled ceilings



Dimensions

Ceiling swirl diffuser type DQJ-SR-P-Z in panelled ceilings, with plenum box type SAK-Z (supply air)



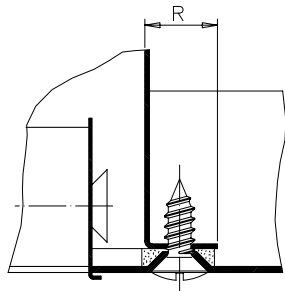
Available sizes

Size	A min.	A max.	B min.	B max.	øD	E	H	a	b	R
310	308	1500	308	900	158	290	260	294	294	8
400	398		398		158	370	260	238	380	12
500	498		498		198	470	300	338	480	12
600	598		598		248	570	350	438	580	12
625	623		623		248	570	350	463	580	24
800	798		798		353	770	455	498	780	12

Mounting possibilities

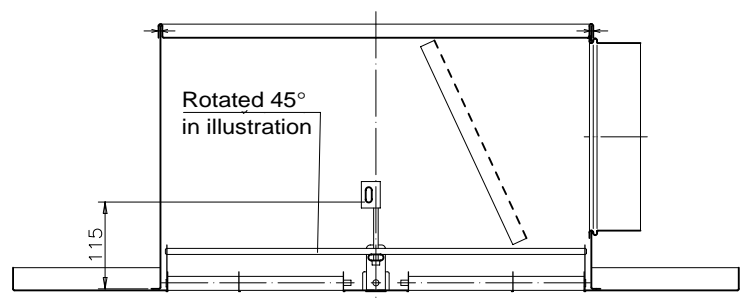
Screw mounting (SM)

Detail X



With screw mounting the ceiling swirl diffuser is mounted to the plenum box by means of 4 or 8 (with size 800) countersunk screws.

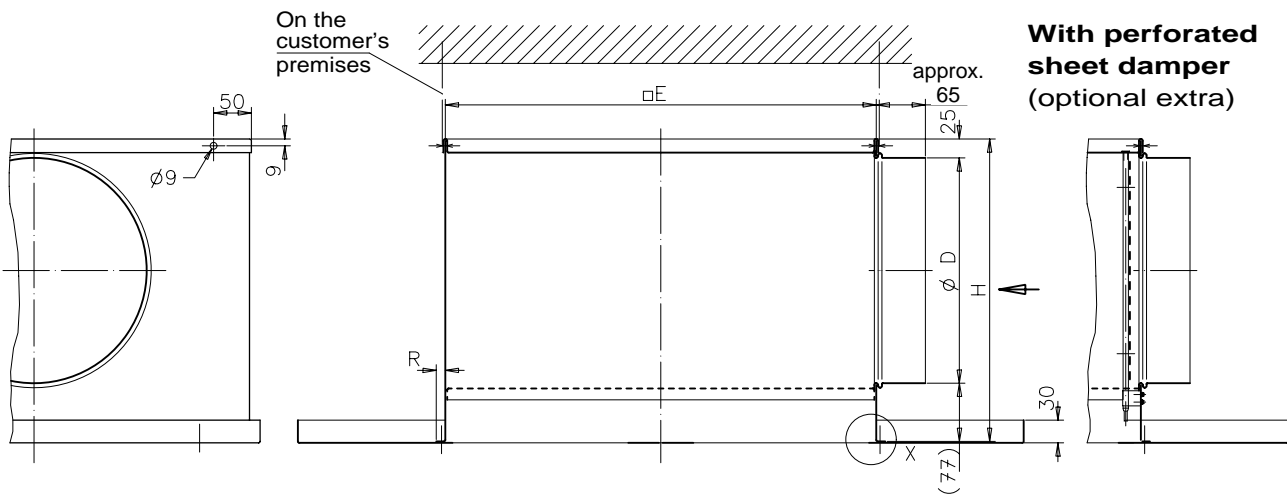
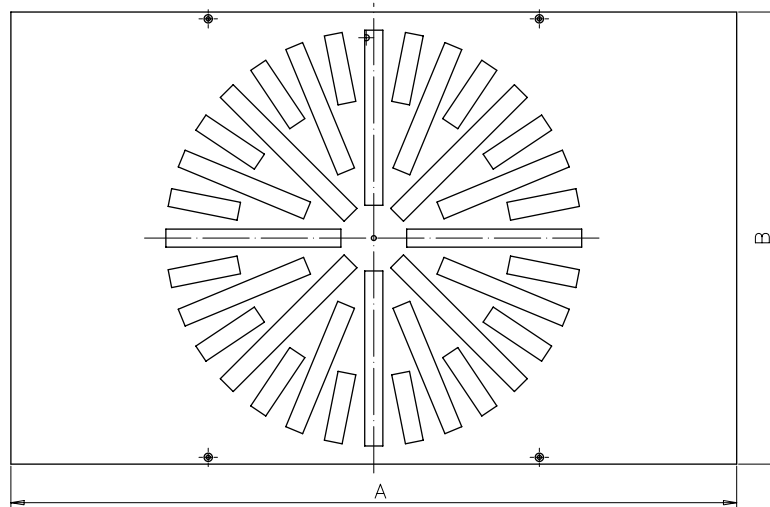
Optional extra: concealed mounting (VM))



With concealed mounting the ceiling swirl diffuser is mounted to the plenum box by means of a cross brace and hexagon socket screw M6.

Dimensions

Ceiling swirl diffuser type DQJA-SR-P-A in panelled ceilings with plenum box type SAK-A (for return air)



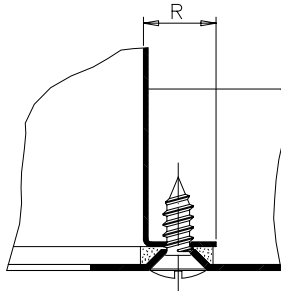
Available sizes

Size	A min.	A max.	B min.	B max.	øD	E	H	a	b	R
310	308	1500	308	900	198	290	300	294	294	8
400	398		398		198	370	300	238	380	12
500	498		498		248	470	350	338	480	12
600	598		598		298	570	400	438	580	12
625	623		623		298	570	400	463	580	24
800	798		798		353	770	455	498	780	12

Mounting possibilities

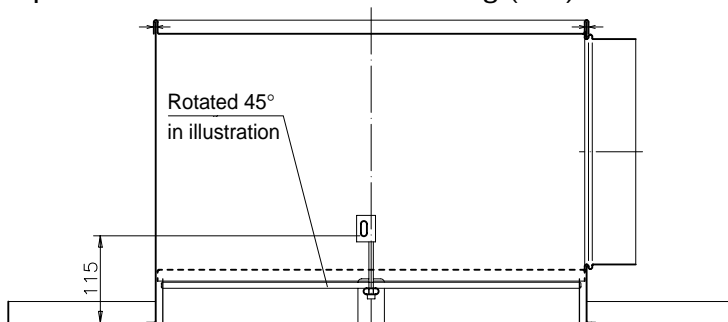
Screw mounting (SM)

Detail X



With screw mounting the ceiling swirl diffuser is mounted to the plenum box by means of 4 or 8 (with size 800) countersunk screws.

Optional extra: concealed mounting (VM)



With concealed mounting the ceiling swirl diffuser is mounted to the plenum box by means of a cross brace and hexagon socket screw M6

Ceiling swirl diffuser type DQJ-SR-P in panelled ceilings



Specification text

Item	Description	Quantity in units	Unit price DM	Total price DM
	<p>Square ceiling swirl diffuser type DQJ-SR-P-Z inpanelled ceilings for supply air, open cross-section, resistance and noise level constant in all blade positions.</p> <p>Front plate the same size as the ceiling panels, made of sheet steel painted RAL 9010 (white) with continuous foam seal and visible screw mounting (SM), with pivoting, individually adjustable, radially positioned air deflection blades in support profile section, made of plastic RAL 9010 (white), RAL 9005 (black) or aluminium painted the same RAL colour as the front plate, with air jet guide „B“.</p> <p>Designation: SCHAKO type DQJA-SR-P-Z</p> <ul style="list-style-type: none"> <input type="checkbox"/> With air jet guide „A“. <input type="checkbox"/> Front plate the same size as the ceiling panels made of: <ul style="list-style-type: none"> <input type="checkbox"/> Natural, anodised aluminium (E6/EV1). <input type="checkbox"/> Stainless steel, brushed front side, DIN 1.4301 (V2A). <input type="checkbox"/> With plenum box (SAK-Z) made of galvanised sheet steel, with integrated perforated sheet straightener as well as side connection pipe and attachment eyes. <ul style="list-style-type: none"> <input type="checkbox"/> With a perforated sheet damper, adjustable from the front, in the plenum box used for air volume control. <input type="checkbox"/> Type DQJA-SR-P-A, without air deflection blades. <input type="checkbox"/> With plenum box (SAK-A) made of galvanised sheet steel, with side connection pipe and attachment eyes. <ul style="list-style-type: none"> <input type="checkbox"/> With a perforated sheet damper, adjustable from the front, in the plenum box used for air volume control. <input type="checkbox"/> With concealed mounting (VM), only possible with plenum box. 			