

## instructions on how to find MyVallox unit via ethernet connection.

So first of all, you should have **Windows 10 operating system on your PC**. Windows 7 can also work but it can be tricky. These instructions are for Windows 10.

If the software is 2.0.0 then it can take longer time to find the unit (up to 5 minutes), but with the latest 2.0.10 it is faster.

### Step 1.

Select the Start button, then select Settings > **Network & Internet**, and on the right side, select **Sharing** options. Under current network, select Turn on **Network** discovery.

(this might require administrator password, depending on your security settings)

### Step 2.

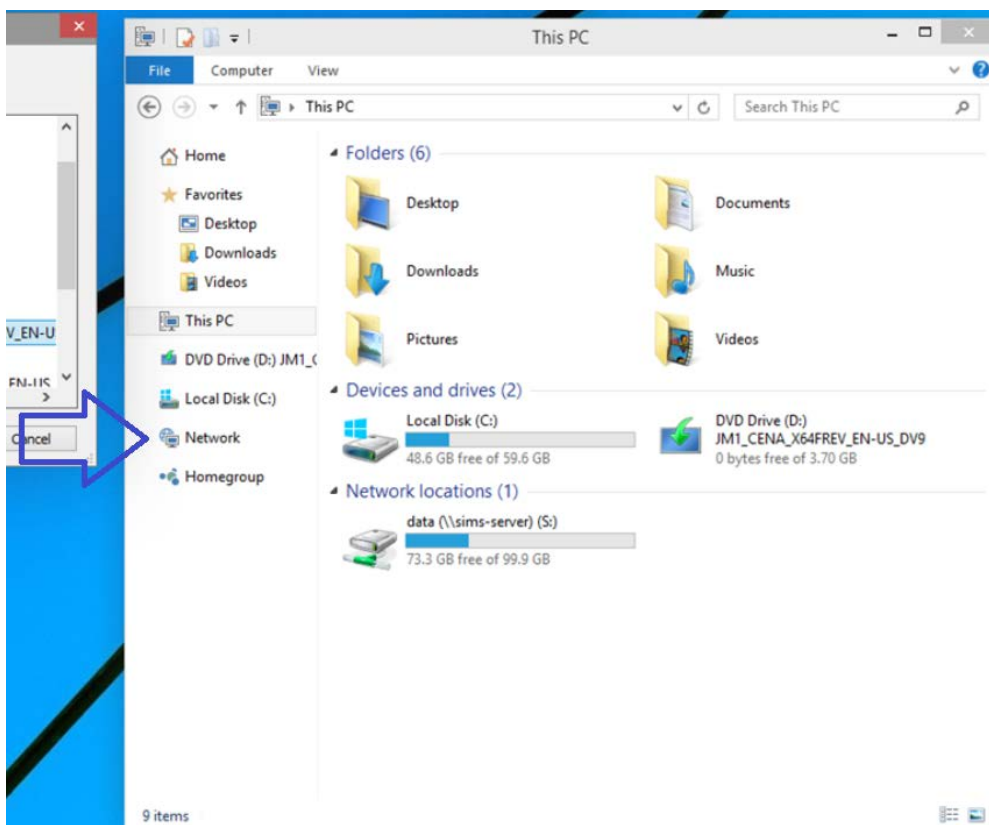
Connect your ethernet cable between PC and MyVallox unit. Keep your PC turned ON. Reboot MyVallox unit. (switch power off for about 10 seconds)

Wait at least 5 minutes. (this can take less time with the latest MyVallox software version)

### Step 3.

Open My Computer > Select **Network**

You should see a network icon named VALLOX#####. Double click to open it on your web browser. It should take you directly to MyVallox UI. Or you can right click the network icon, select properties, copy IP address from there and then paste that IP to your web browser.



This method will work on most PCs, but there are few known cases where the PC had firewall or network card settings which blocked the connection entirely. In this case, only option is to try with a different PC or assemble a network using a router or network switch.