

SS

Stativsystem 35

Beskrivelse

Stativsystem anvendes til opbygning af stativer, reoler og konsoller mv.

Det færdige stativ bør sikres med selvsikrende skruer.

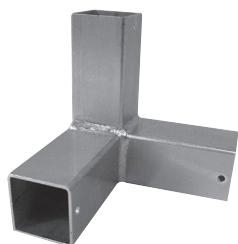
Beregnet for indendørs montage.

Materiale af galvaniseret stål

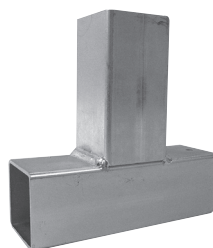
SS0030 Stativrør 35x35x3000



SS0031 Hjørne



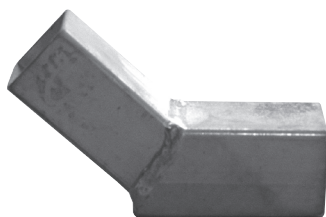
SS0032 T-styk



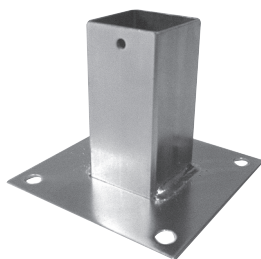
SS0033 Bøjning 90°



SS0034 Bøjning 45°



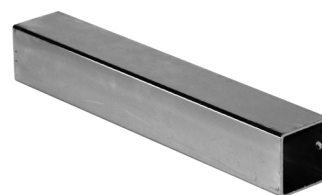
SS0035 Fod



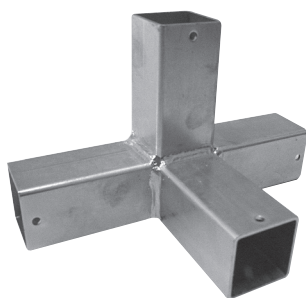
SS0036 Vægbeslag



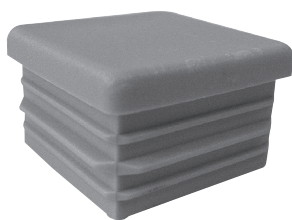
SS0037 Muffestykke 40x40x250



SS0038 X-vinkel



SS0039 Plastprop



SS0040 Justerbar fod

