

SSVG

Stativsystem 45

Beskrivelse

Stativsystem anvendes til opbygning af stativer, reoler og konsoller mv.

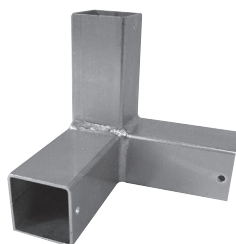
Det færdige stativ bør sikres med selvskærende skruer.

Materiale af varmgalvaniseret stål

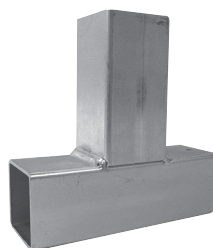
SSVG0030 Stativrør 45x45x3000



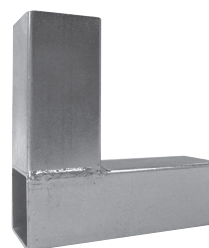
SSVG0031 Hjørne



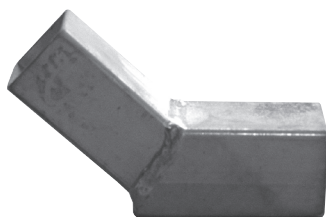
SSVG0032 T-styk



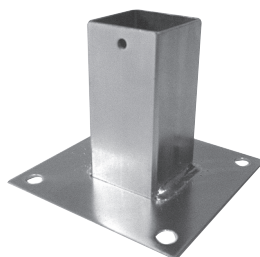
SSVG0033 Bøjning 90°



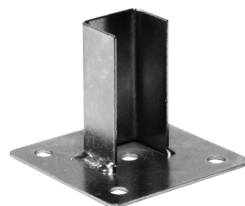
SSVG0034 Bøjning 45°



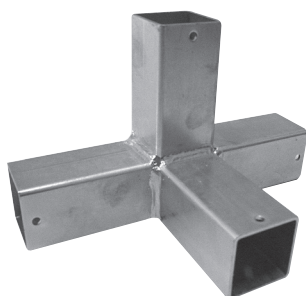
SSVG0035 Fod



SSVG0036 Vægbeslag



SSVG0038 X-vinkel



SSVG0039 Plastprop

